



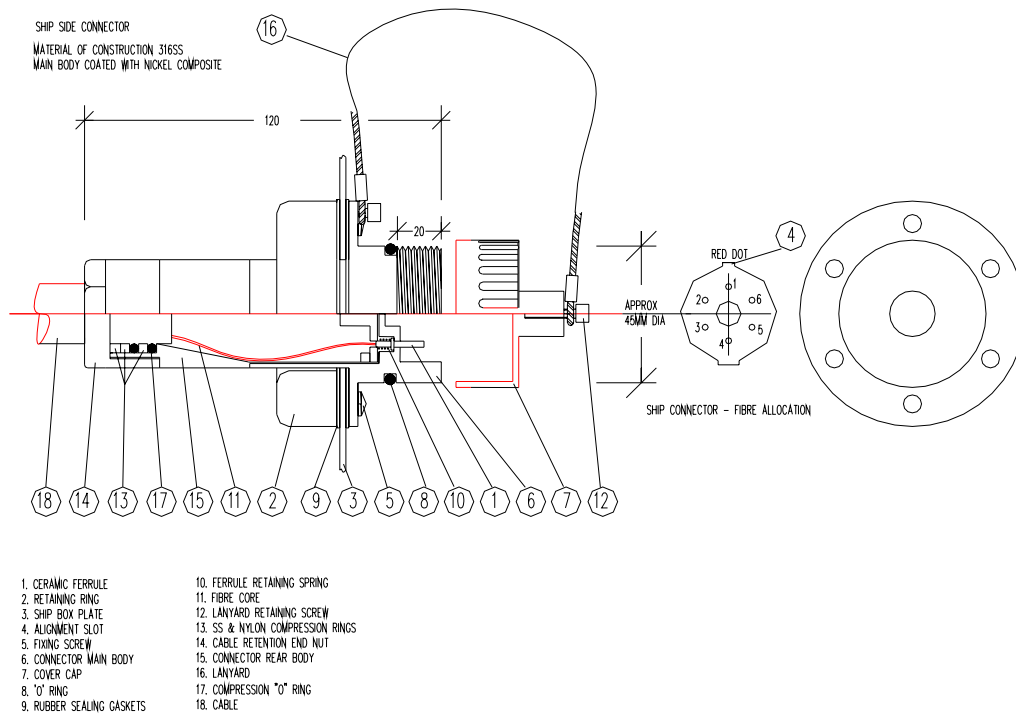
## 6 WAY SHIP CONNECTOR

The NFI 6 way ship connector is a harsh environment 6 fibre multimode connector. It was designed specifically to interface with shore side connectors fitted to ESD and communications systems installed on LNG loading & unloading jetties worldwide.

It is fully compatible with all NFI/Seatechnik and Furukawa LNGC ESD & communications fibre optic connectors.

The connector consists of a 316 grade stainless steel body with brass blind cap. The connector bodies are coated with a revolutionary Nickel Composite which combines the accuracy of electroless nickel with the excellent sliding properties of PTFE. This completely overcomes any problems of galling or wear which can otherwise result from repeated mating. Ship connector dust caps are Electroless Nickel coated.





## CONNECTOR SPECIFICATIONS

Body:	316 stainless steel - Nickel Composite coated
Dust Cap:	Electroless Nickel coated Bronze
Ferrules:	Full ceramic FC singlemode
Fibre:	50/125µm multimode
Alignment Sleeves:	Phosphor bronze "C" type
Fibre Allocation:	Fibres 1 & 2 Telephone, hotline and modem channels
	Fibres 3 & 4 Ship/Shore ESD
	Fibres 5 & 6 Spare or customer specific